



8 The Mulberrys

Victoria Avenue

BH19 1AN

WELL PRESENTED 3 BEDROOM PENTHOUSE APARTMENT WITH  
ALLOCATED PARKING, WITHIN A 5 MINUTE WALK OF THE BEACH &  
TOWN CENTRE - GREAT HOLIDAY LET INCOME/INVESTMENT

**GUIDE PRICE £550,000**

**ALBURY  
& HALL**





This second floor penthouse apartment is extremely well presented and deceptively spacious. There are stairs and a lift to all upper floors, independent Gas fired central heating and secure admission to communal front door.

The front door to No. 8 The Mulberrys opens into a long entrance hall from which all rooms are accessed. The open plan Living area is light and spacious with south facing window and west facing patio doors which opens onto a small balcony. There is ample space for comfortable seating, dining table and chairs combined with a stylishly designed kitchen providing great storage along with integral appliances and breakfast bar, making a very sociable space.

The Master Bedroom is a generous L shaped retreat with space for bed and associated furniture, along with a quiet seating area to relax. The En Suite Bathroom comprises of bath with hand held shower, wash basin, w.c. and heated towel rail. Bedroom 2 is a west facing double room with Bedroom 3, also a double room with velux roof light. The Family Shower Room comprises of corner shower, wash basin, w.c. and heated towel rail.

Outside – There are two allocated parking spaces in the communal car park.

Currently a holiday let charged at £220 per night between April & September annually. All fixtures, fittings and furniture can stay, a great ‘turn key’ property with income.

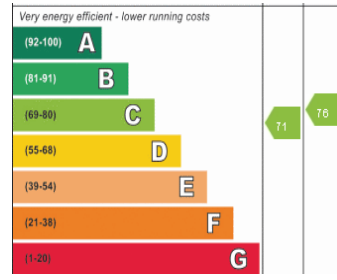
**Share of Freehold**

**Holiday & AST Lets Permitted**

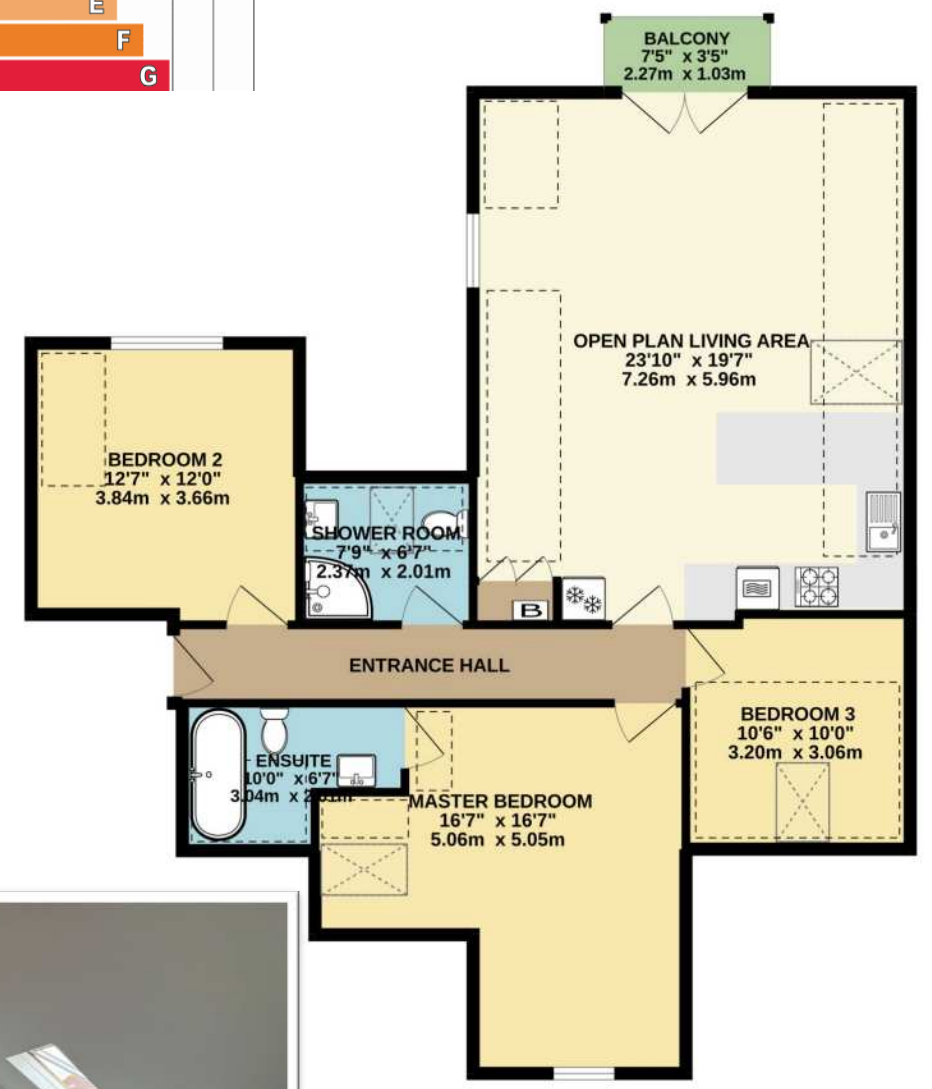
**No Pets**

**Annual Maintenance charges approx. £1800 per annum**





**GROUND FLOOR**  
1116 sq.ft. (103.7 sq.m.) approx.



TOTAL FLOOR AREA : 1116 sq.ft. (103.7 sq.m.) approx.

Whilst every attempt has been made to ensure the accuracy of the floorplan contained here, measurements of doors, windows, rooms and any other items are approximate and no responsibility is taken for any error, omission or mis-statement. This plan is for illustrative purposes only and should be used as such by any prospective purchaser. The services, systems and appliances shown have not been tested and no guarantee as to their operability or efficiency can be given.  
Made with Metroplex ©2022





Viewing by appointment through sole agents:

**Albury & Hall (Swanage) Ltd. 24 Station Road, Swanage. BH19 1AF**

**01929 66 00 00   [info@alburyandhall.co.uk](mailto:info@alburyandhall.co.uk)   [www.alburyandhall.co.uk](http://www.alburyandhall.co.uk)**

**ALBURY  
& HALL**

Registered in England & Wales Company No. 1000347 . PLEASE NOTE: Measurements quoted are approximate and for guidance only. Fixtures and fittings , services and appliances have not been tested and therefore no guarantee can be given that they are in working order. Images have been produced for information and it cannot be inferred that any items shown is included with the property. These particulars are believed to be correct but their accuracy is not guaranteed and they do not constitute an offer or form part of a contract. Solicitors are specifically requested to verify the sales particulars details in the pre contract enquiries in particular price, local and other services.