



WOODYHYDE COURTYARD

CORFE CASTLE

BH20 5HT

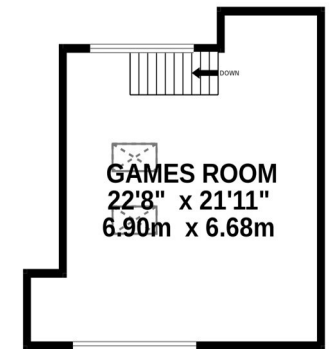
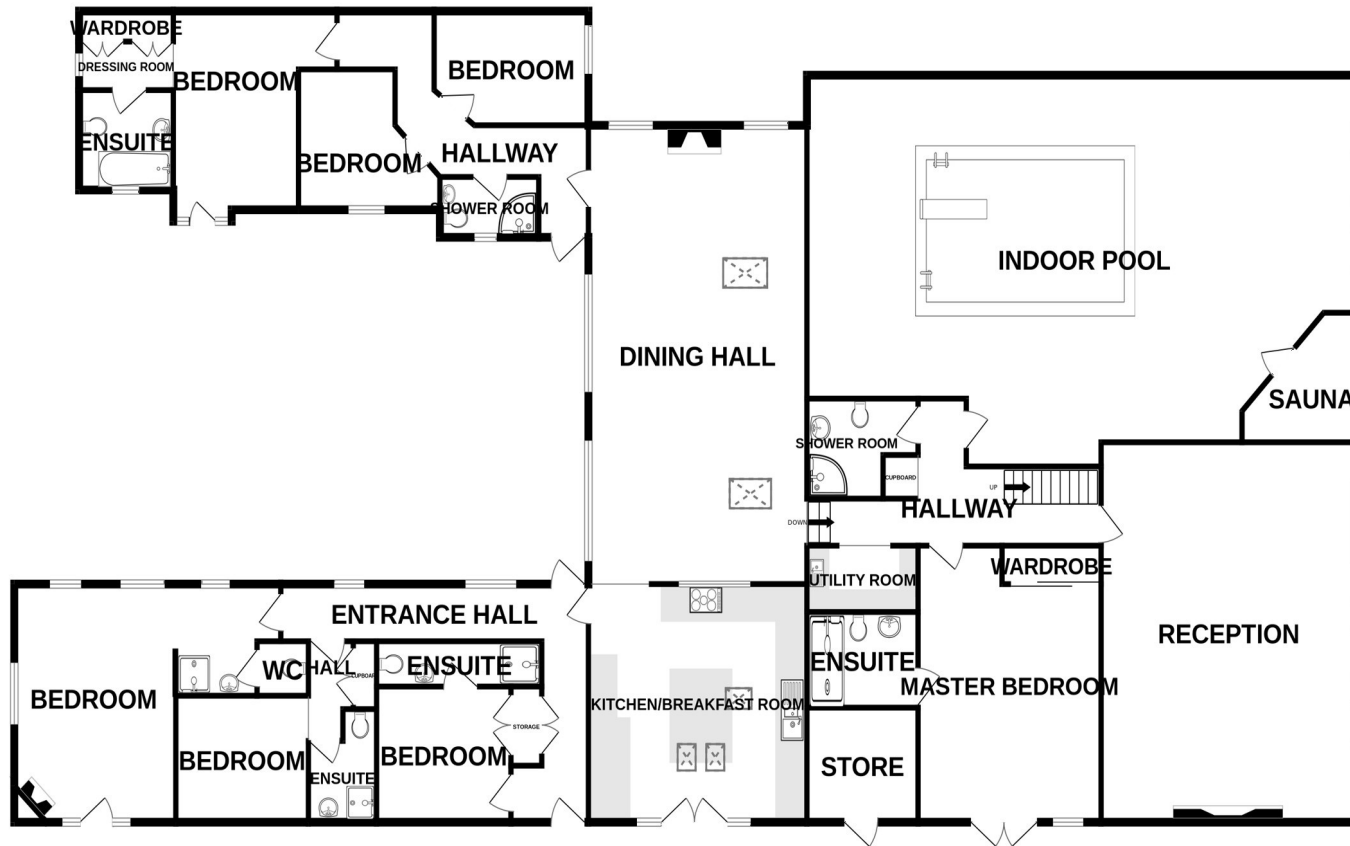
**Outstanding & Substantial 7 Bedroom Dwelling with
Indoor Pool, Sauna, Tennis Court set within 2 Acres
in the AONB of the Purbeck Valley**

Guide Price £2,500,000

**ALBURY
& HALL**

GROUND FLOOR
4038 sq.ft. (375.1 sq.m.) approx.

1ST FLOOR
419 sq.ft. (38.9 sq.m.) approx.



TOTAL FLOOR AREA : 4457 sq.ft. (414.1 sq.m.) approx.

Whilst every attempt has been made to ensure the accuracy of the floorplan contained here, measurements of doors, windows, rooms and any other items are approximate and no responsibility is taken for any error, omission or mis-statement. This plan is for illustrative purposes only and should be used as such by any prospective purchaser. The services, systems and appliances shown have not been tested and no guarantee as to their operability or efficiency can be given.

Made with Metropix ©2024

Nestled within the heart of the Purbeck Valley sits a pretty cluster of residences, to include the spectacular farm conversion 'Woodyhyde Courtyard'.



SET IN THE HEART OF THE PURBECK VALLEY

Woodyhyde Courtyard is a substantial and luxurious property, arranged mostly over the ground floor, offering exceptional accommodation in approximately 4500sq ft, comprising 7 double Bedrooms, 4 Reception Rooms, Indoor Swimming Pool, Sauna, Games Room, Tennis Court, Garden & Orchard plus a further paddock all set within approx. 2 acres.



ALBURY
& HALL





WOODYHYDE COURTYARD Nestled in the Purbeck Valley on the outskirts of Corfe Castle is Woodyhyde, historically a working farm. The farmhouse has been refurbished, and the many barns and outbuildings have been converted into singular residential dwellings, to create the impressive, mostly open-plan residence of Woodyhyde Courtyard.

THE KITCHEN - The modern spacious kitchen has a beamed and vaulted ceiling and french doors to an adjacent patio. Luxuriously fitted there are two ovens, a ceramic hob, two door larder style fridge-freezer and under counter fridge and two dish washers.

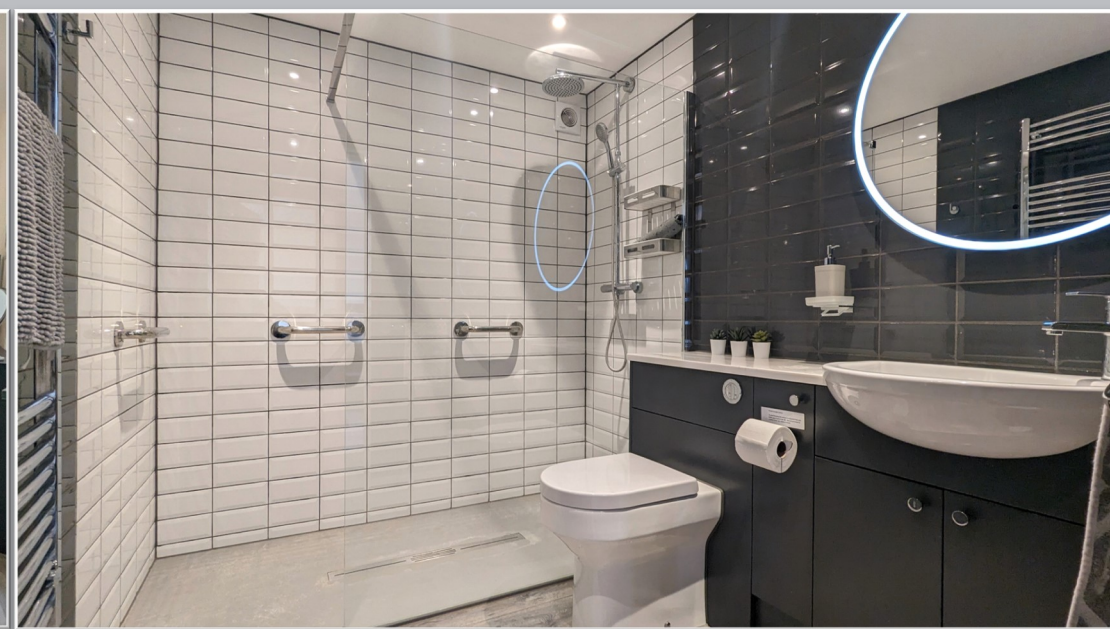


THE DINING ROOM—The dining area is accessed through an arch from the kitchen and is a large open plan space with a beamed and vaulted ceiling. There is a woodburning stove .

THE LOUNGE—This large room has a part vaulted ceiling with picture window and bi-fold doors giving extensive views over the main patio area to the hills to the south. Comfy seating areas, centre around a large log effect gas fire.

THE DRINKS PANTRY—An additional serving area with wine and beer chillers and additional sink. There is a separate alcove with washer/dryer.





THE MASTER SUITE—This very spacious suite is immaculately designed with French doors to an external seating area, with newly designed Ensuite with generous walk in Shower

BEDROOM 2—This open plan suite is a generous double beautifully fitted with a woodburning stove and a door leading to a patio area with outside seating. There is an open-plan Ensuite to the shower area with an enclosed WC.

BEDROOM 3—Double in size plus benefitting an Ensuite shower room

BEDROOM 4—Double in size plus benefitting an Ensuite shower room





BEDROOM 5— A generous Double room offering shared use of the Shower room to Bed 6.

BEDROOM 6— Double in size plus shared use of the Shower room

BEDROOM 7— Spacious Double room with large Ensuite bathroom with shower over bath.



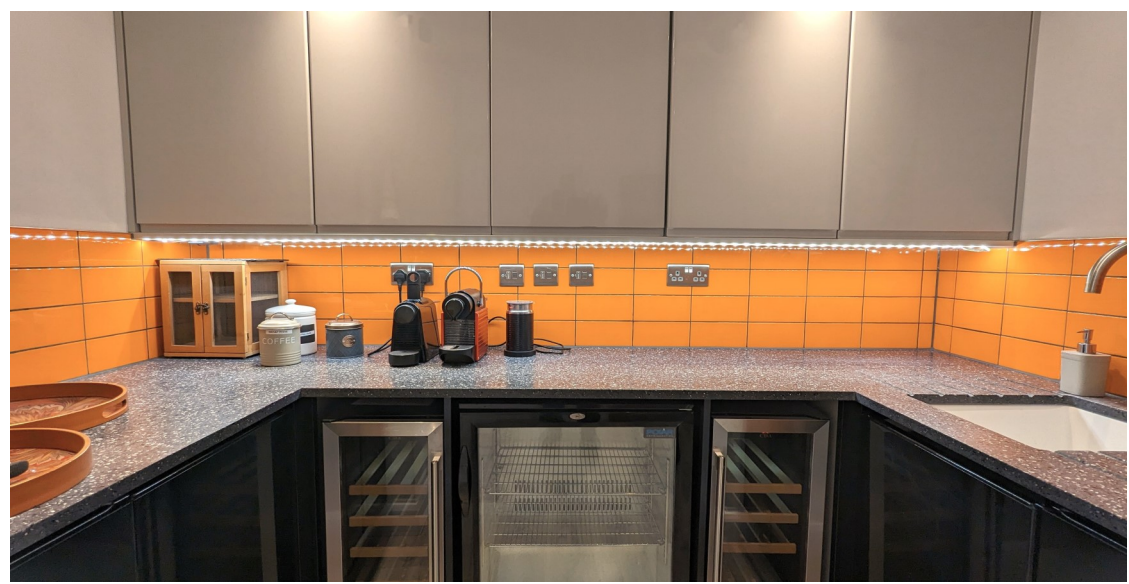


HEATED INDOOR SWIMMING POOL

SAUNA

GAMES ROOM





THE GROUNDS—Comprise of spacious Patio seating areas, pretty Courtyard settings, large lawned Garden area, Tennis Court, Orchard plus additional Paddock—all set within approx. 2 Acres.





Viewing by appointment through sole agents:

Albury & Hall (Dorset) Ltd, 24 Station Road, Swanage. BH19 1AF

01929 66 00 00 info@alburyandhall.co.uk www.alburyandhall.co.uk

**ALBURY
& HALL**

Registered in England & Wales Company No. 14528884 . PLEASE NOTE: Measurements quoted are approximate and for guidance only. Fixtures and fittings , services and appliances have not been tested and therefore no guarantee can be given that they are in working order. Images have been produced for information and it cannot be inferred that any items shown is included with the property. These particulars are believed to be correct but their accuracy is not guaran-